

myMarket

Report



How

is

the

market?

Taupo, Rotorua, Tokoroa & Putaruru | May 2018

The latest property market update for the **Taupo, Rotorua, Tokoroa & Putaruru region**. Helping you with your property decisions.

Within the Taupo, Rotorua, Tokoroa & Putaruru area, Hilltop has the highest median dwelling price of \$523k. This demonstrates growth of 2.7% across the year, and a change of 0.5% across the quarter.

With the median dwelling price for New Zealand currently \$678k, 10 suburbs of Taupo, Rotorua, Tokoroa & Putaruru are below the national average, demonstrating the area's affordability.

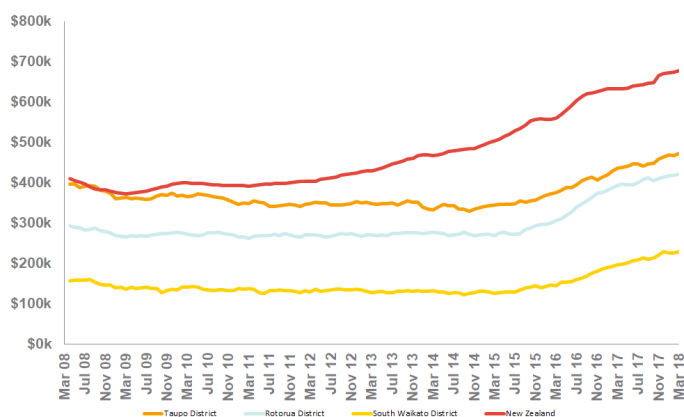
Taupo, Rotorua, Tokoroa & Putaruru is also performing on par with New

Zealand as a whole with median price performance of 7.1%, 8.3% and 16.4% from Rotorua District, Taupo District and South Waikato District respectively compared to 7.3% nationally.

The last three months have seen 334 sales across Taupo, Rotorua, Tokoroa & Putaruru and 1,777 over the past year. The suburbs with the most sales were Tokoroa with 398 and Taupo with 272 sales over the past 12 months.

Since 2008, the best performing region has been Taupo District with growth of 17.7%.

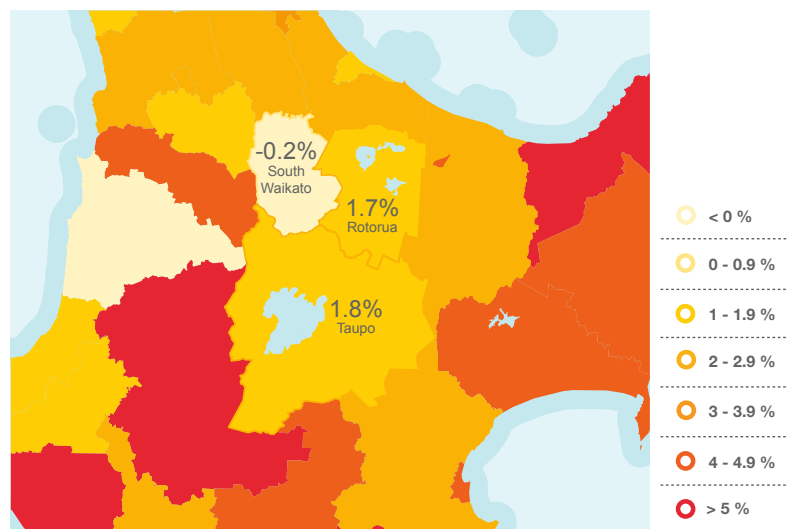
House Price Index



Current Value & Recent Change

	New Zealand Median dwelling price	\$678k	+1.2% Qtr change	+7.3% Yearly change
	Taupo District Median dwelling price	\$471k	+1.8% Qtr change	+8.3% Yearly change
	Rotorua District Median dwelling price	\$420k	+1.7% Qtr change	+7.1% Yearly change
	South Waikato District Median dwelling price	\$229k	-0.2% Qtr change	+16.4% Yearly change

3 Month Value Change



Rotorua Market Update

Owhata has performed consistently over the past five years with median value growth of 60.2%.

The median value of a dwelling in Owhata is now \$402K which is 10.9% up from the same time last year.

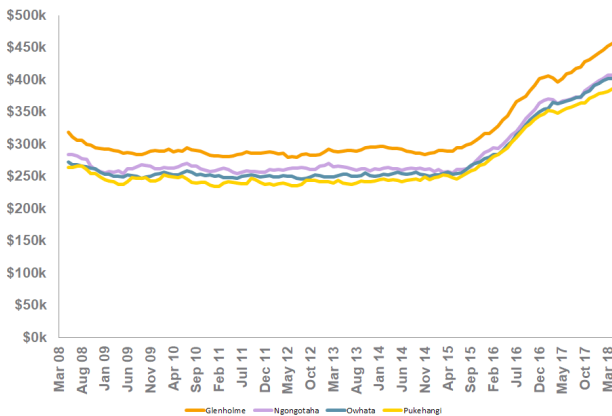
There were 184 sales over the past 12 months in Owhata and there were 30 listings on the market last month.

In Glenholme, the median value of a dwelling is now \$457K which represents growth of 58.3% over the past five years and gains of 15.0% over the past year.





There are 1,501 dwellings in Glenholme with 115 selling over the past 12 months and 36 listings on the market last month.

Pukehangi recorded median dwelling value growth of 10.9% over the past 12 months to \$386K. The smallest suburb in the area is Glenholme which has just 1,501 dwellings. Values here for dwellings have grown by 15.0% over the past 12 months, and the median value is now \$457K.

Median Suburb E-Valuer



Current Value & Recent Change

	Pukehangi	\$386k Median dwelling price	+2.1% Qtr change	+10.9% Yearly change
	Ngongotaha	\$408k Median dwelling price	+2.3% Qtr change	+12.3% Yearly change
	Owhata	\$402k Median dwelling price	+2.0% Qtr change	+10.9% Yearly change
	Glenholme	\$457k Median dwelling price	+3.2% Qtr change	+15.0% Yearly change

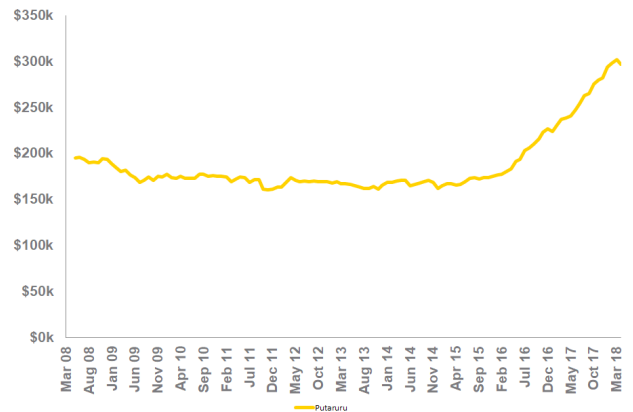
Putaruru Market Update

Putaruru has performed consistently over the past five years with median value growth of 77.6%.

The median value of a dwelling in Putaruru is now \$297K which is 24.4% up from the same time last year.

There were 164 sales over the past 12 months in Putaruru and there were 50 listings on the market last month.

Median Suburb E-Valuer



Current Value & Recent Change

	Putaruru	\$297k Median dwelling price	+1.0% Qtr change	+24.4% Yearly change
---	----------	--	---------------------	-------------------------

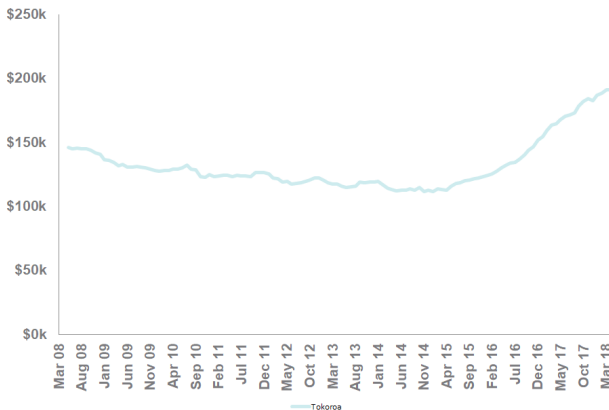
Tokoroa Market Update

Tokoroa has performed consistently over the past five years with median value growth of 62.6%.

The median value of a dwelling in Tokoroa is now \$191K which is 15.8% up from the same time last year.

There were 398 sales over the past 12 months in Tokoroa and there were 88 listings on the market last month.

Median Suburb E-Valuer



Current Value & Recent Change



Tokoroa

\$191k

Median dwelling price

+2.1%
Qtr change

+15.8%
Yearly change

Taupo Market Update

Taupo has performed consistently over the past five years with median value growth of 41.3%.

The median value of a dwelling in Taupo is now \$429K which is 6.4% up from the same time last year.

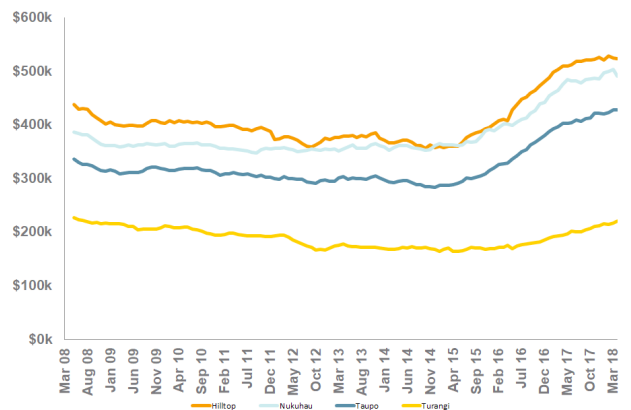
There were 272 sales over the past 12 months in Taupo and there were 33 listings on the market last month.

In Nukuhau, the median value of a dwelling is now \$491K which represents growth of 38.4% over the past five years and gains of 3.3% over the past year.

There are 1,474 dwellings in Nukuhau with 137 selling over the past 12 months and 25 listings on the market last month.

Hilltop recorded median dwelling value growth of 2.7% over the past 12 months to \$523K. The smallest suburb in the area is Hilltop which has just 1,186 dwellings. Values here for dwellings have grown by 2.7% over the past 12 months, and the median value is now \$523K.

Median Suburb E-Valuer



Current Value & Recent Change



Turangi

\$220k

Median dwelling price

+2.3%
Qtr change

+13.2%
Yearly change



Nukuhau

\$491k

Median dwelling price

-1.1%
Qtr change

+3.3%
Yearly change



Taupo

\$429k

Median dwelling price

+2.0%
Qtr change

+6.4%
Yearly change



Hilltop

\$523k

Median dwelling price

+0.5%
Qtr change

+2.7%
Yearly change

If you're looking to sell, buy or rent,
we can connect you with your local
LJ Hooker office today.

myMarket
Report



Contact Us On:

Rotorua

Rotorua Realty Services Ltd

Cnr Eruera & Amohia Sts
Rotorua
07 348 5058
07 348 2381
rotorua@ljh.co.nz

Taupo

Realty Link Marketing Ltd

95 Heuheu Street
Taupo
07 378 3357
07 378 6075
taupo@ljh.co.nz

Putaruru

Putaruru Real Estate Ltd

Cnr State Highway 1 & Main Street
Putaruru
07 883 8810
07 883 8800
putaruru@ljh.co.nz

All LJ Hooker offices are Licensed REAA 2008